



MINISTRY OF NATURAL RESOURCES AND ENVIRONMENT (MONRE)

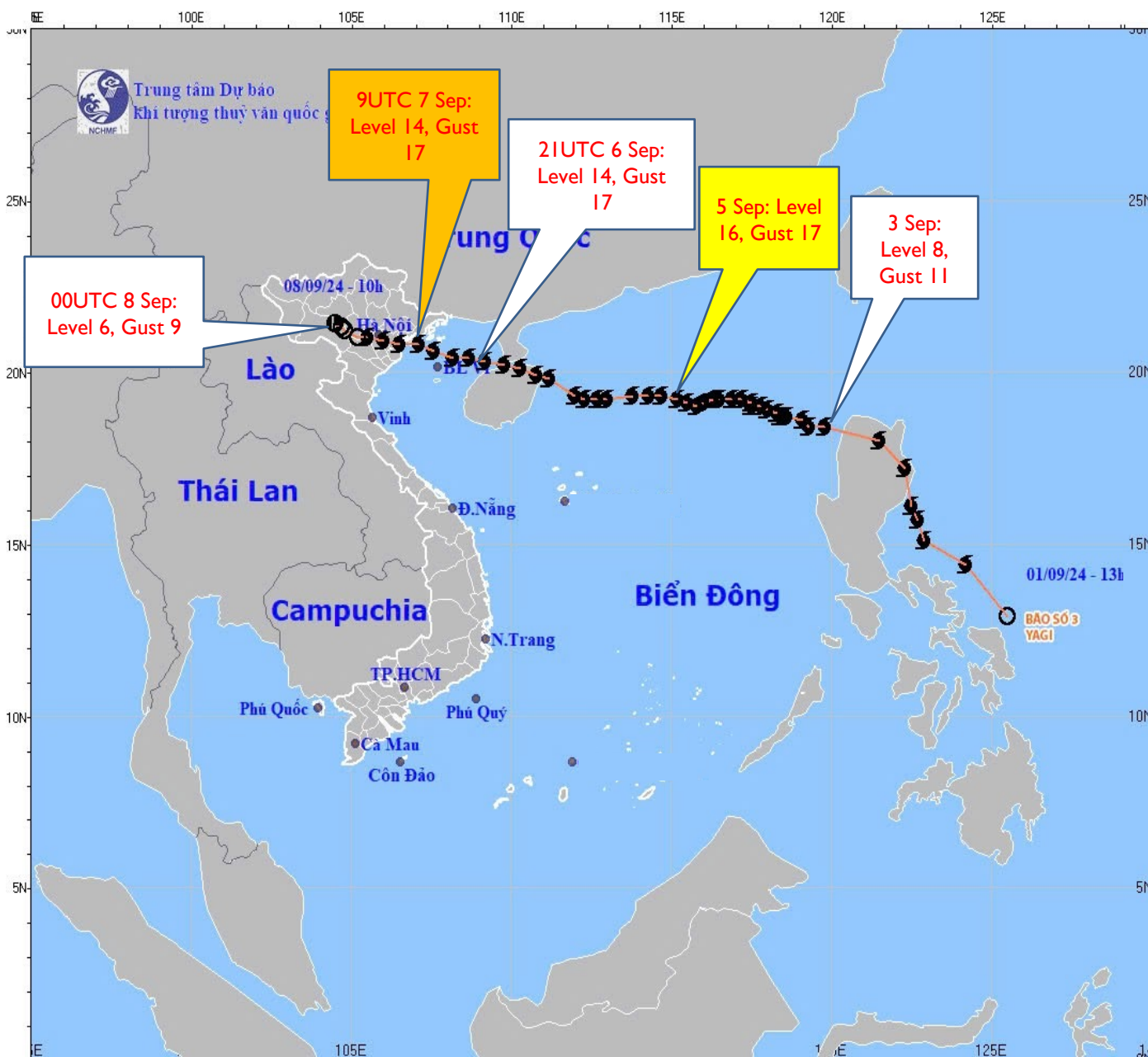
Viet Nam Meteorological And Hydrological Administration (VNMHA)

National Center for Hydro-Meteorological Forecasting (NCHMF)



NCHMF

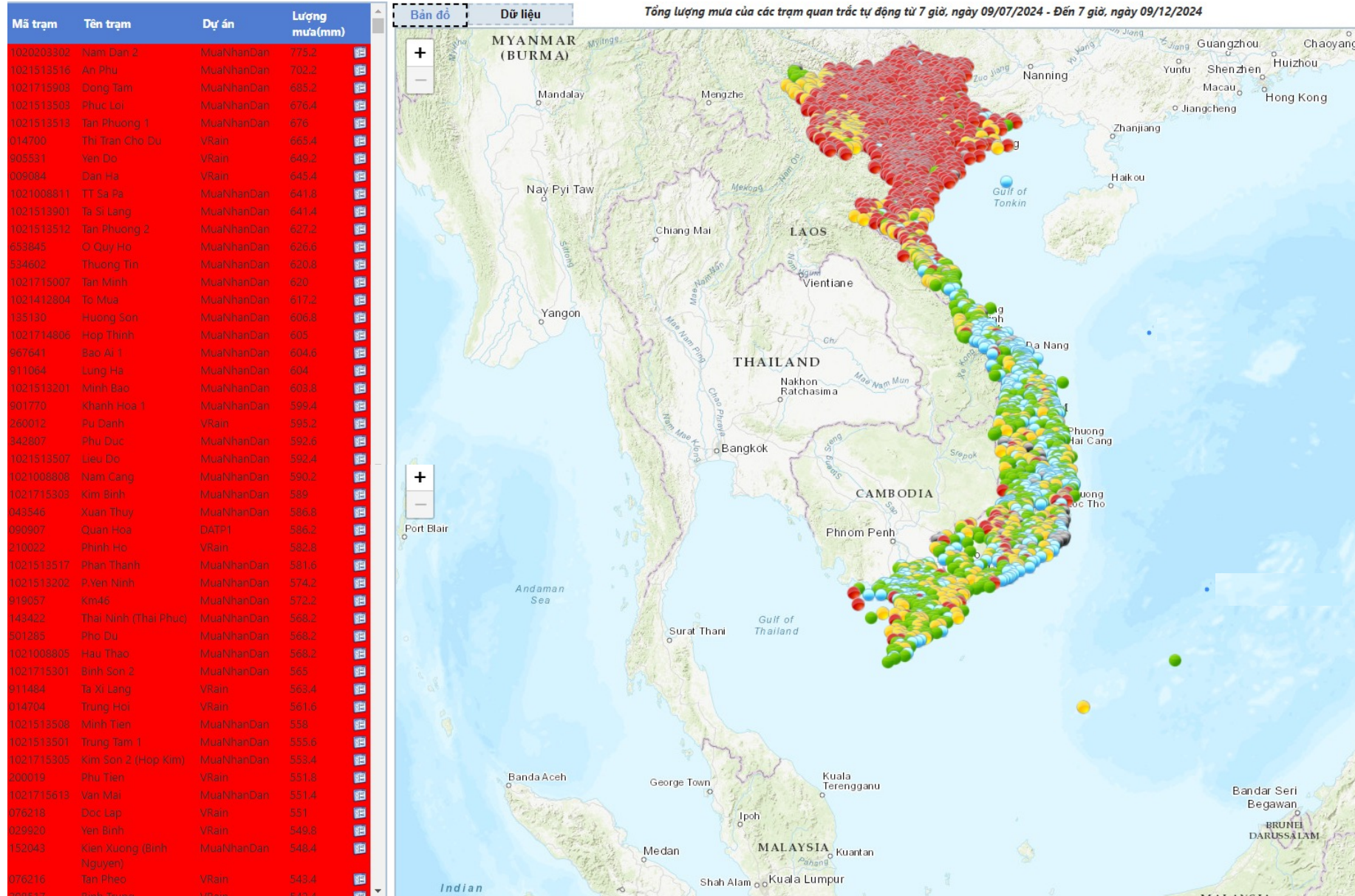
Super Typhoon YAGI (Sep-2024) & its impacts on VIETNAM



- TY.YAGI (or TS No.3 in 2024 assigned by the NCHMF) is the **strongest TC making landfall** and the **longest TS remaining the TS. class after making landfall** in Vietnam during the last 30 years (>6 hours).
- When **making landfall in the late afternoon on Sep 7**, its center still had **strong winds level 13**, gust level 15-16, then decreased to below level 8, gust level 10-11 when moving farther inland.



WIDESPREAD LONG-LASTING HEAVY RAINFALL



- 00 UTC 7 – 12 Sep, 2024: a **severe widespread long-lasting heavy rainfall event** over the northern Vietnam, especially in the eastern side of the Hoang Lien Son mountain range.
- **Popular amount: 250 – 450 mm**, especially in some mountainous areas such as Lao Cai, Yen Bai **higher than 700 mm**.
- **High rainfall intensity** (>200mm in 2 hours in Yen Bai city on 9 Sep)



Phong Chau Bridge in Phu Tho Province broke down



Long Bien Bridge in Hanoi closed due to a rising river water level



Flood, flash flood, and inundation occurred in many provinces from the east to the west.

DAMAGES: LANDSLIDE



Facilities was damaged severely region wide



A landslide on Sep 10 **wiped out a local community** (Nu village, Bao Khanh commune, Bao Yen district, Lao Cai province) with 55 deaths, 12 missing.

There were many other landslide events occurring in Lao Cai, Yen Bai, Bac Kan, Thai Nguyen, Tuyen Quang, Cao Bang. (<https://vnexpress.net/hau-qua-bao-yagi-4790589.html>)

THIỆT HẠI DO BÃO SỐ 3 (YAGI)

Tính đến ngày **27/9/2024**

Số liệu tại Hội nghị trực tuyến với các bộ, ngành và 26 tỉnh, thành phố sơ kết, đánh giá, rút kinh nghiệm về công tác phòng, chống và khắc phục hậu quả bão số 3, sáng 28/9/2024

26

người mất tích

318

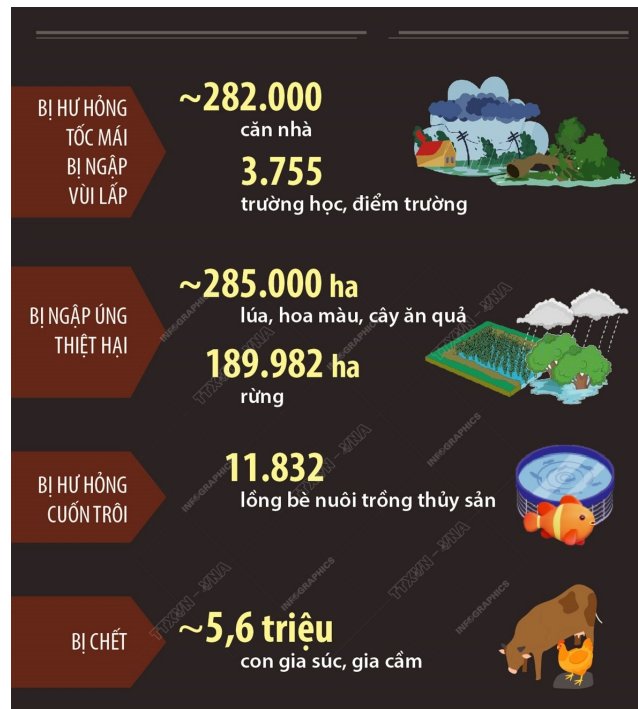
người chết

1.976

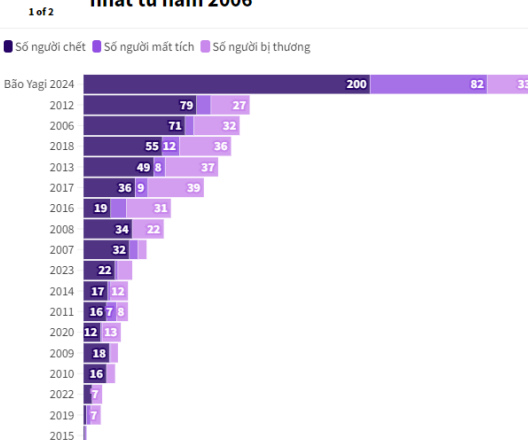
người bị thương



>81.000 tỷ đồng
thiệt hại về tài sản
của nhân dân và nhà nước



Thiên tai sau bão Yagi gây thiệt hại về người nhiều nhất từ năm 2006



Nguồn: Bộ Nông nghiệp và Phát triển nông thôn



Super Typhoon Yagi caused damages estimated at VND81.5 trillion (US\$3.31 billion) across northern Vietnam, with most damage triggered by landslides and flash floods.

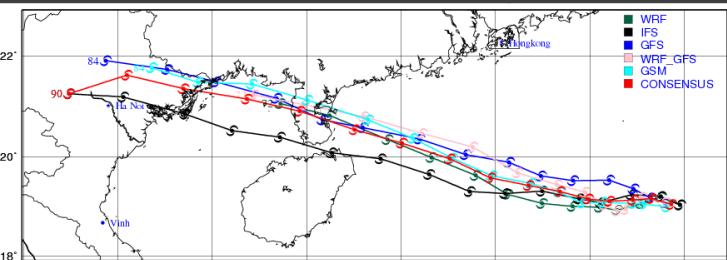
The political apparatus at all levels swiftly engaged in disaster response efforts before, during and after the typhoon.



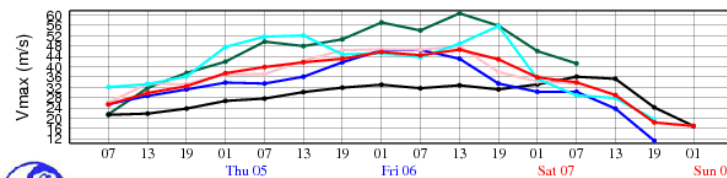
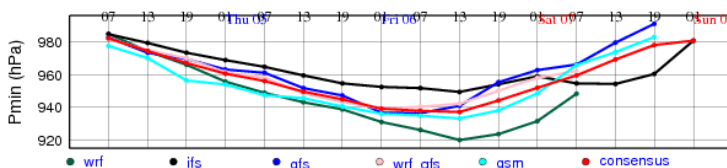
- Evacuation, relocation
- Close schools, bridges

- Reinforce dikes, hydropower reservoirs
- Support people before, during and after the event

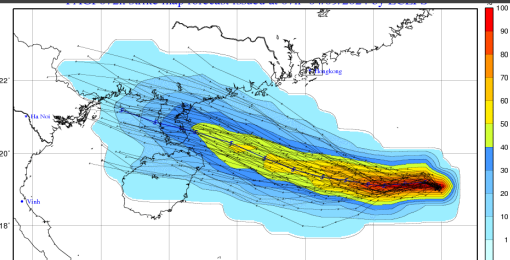
➤ ...



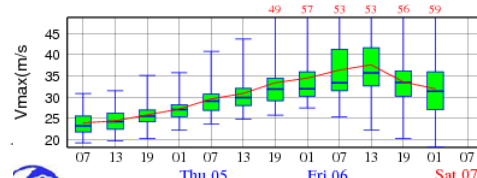
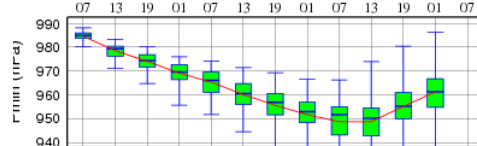
Prediction of Pmin and Vmax for YAGI



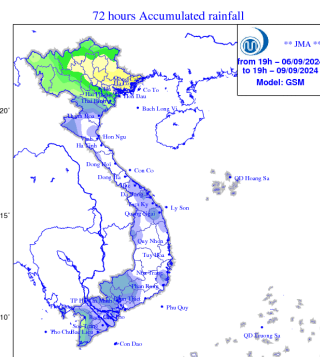
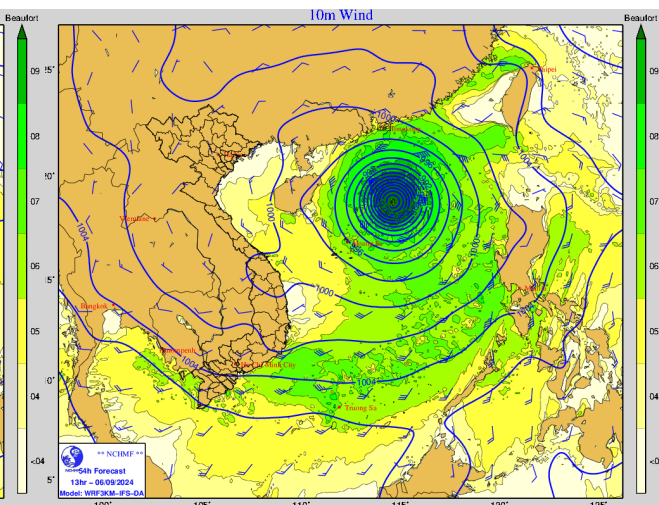
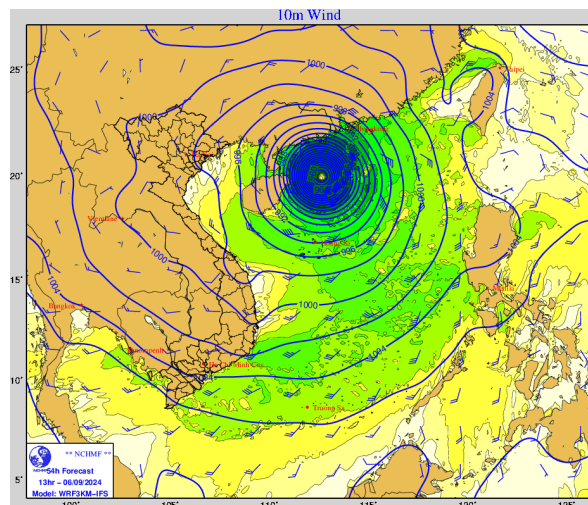
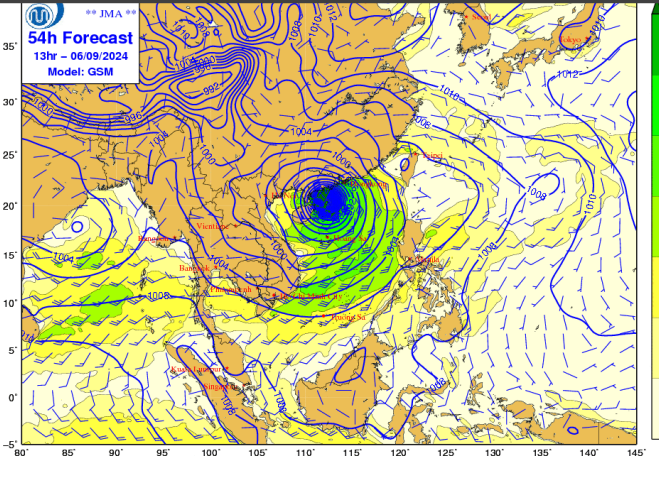
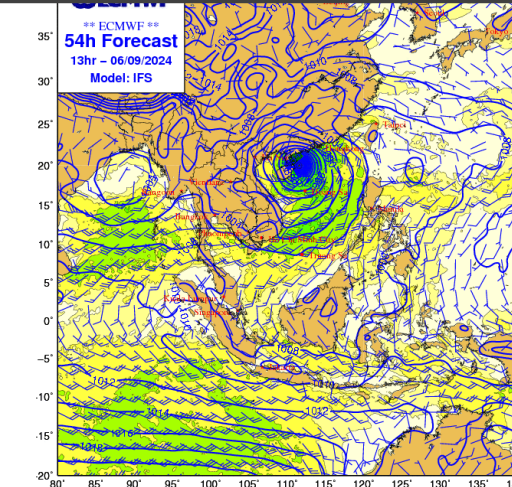
Valid from 07h-04/09/2024 to 01h-08/09/2024
All rights reserved. Copyright © NCHMF



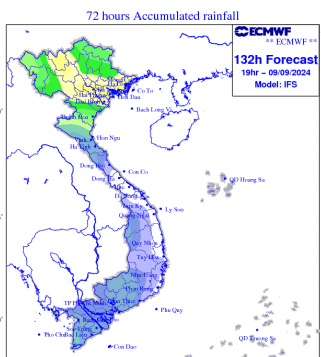
Prediction of Pmin and Vmax for YAGI



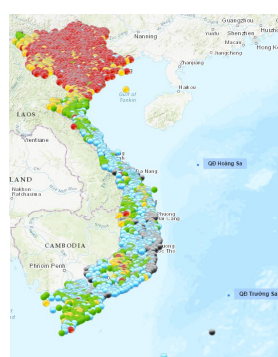
ECEFS 51 members
Valid from 07h-04/09/2024 to 07h-07/09/2024
All rights reserved. Copyright © NCHMF



GSM



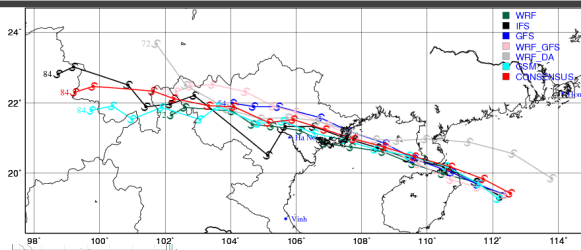
EC



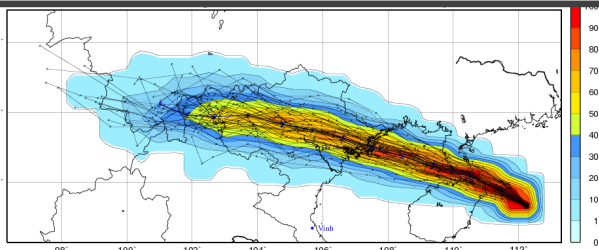
OBS

Analysis Time: 24090400

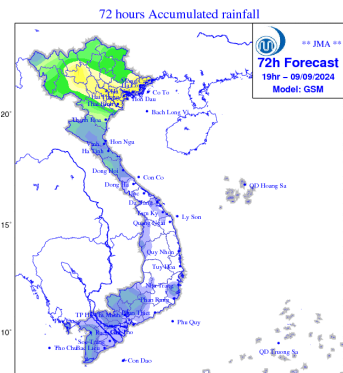
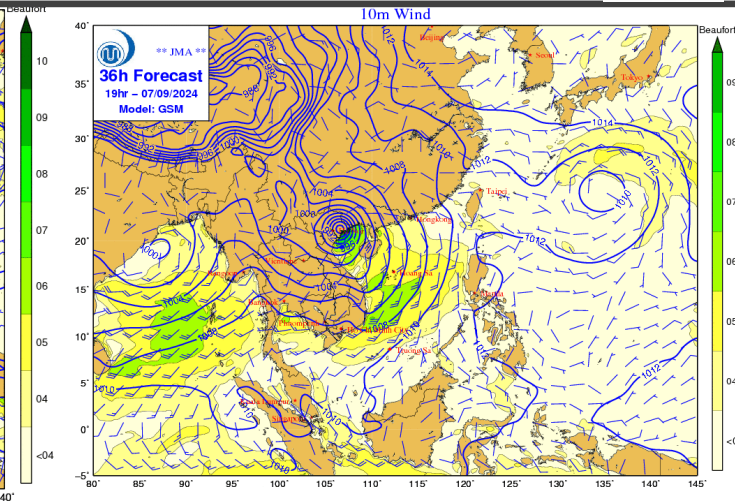
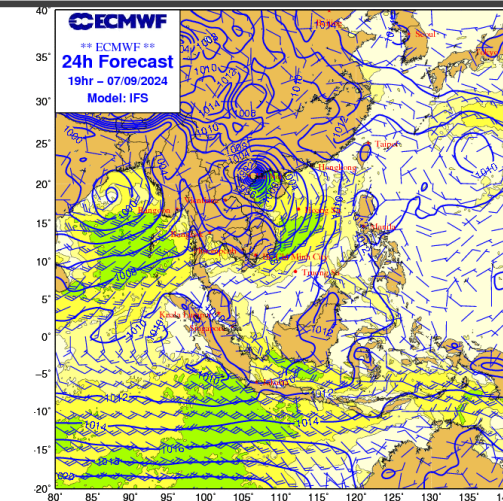
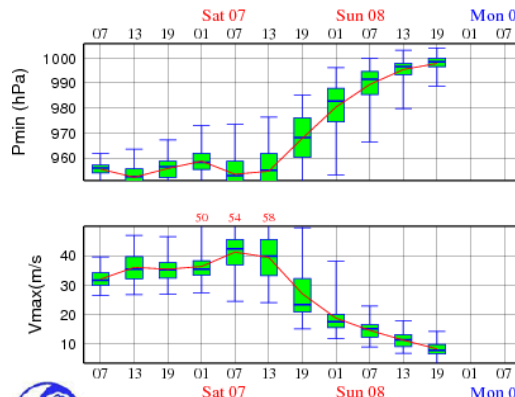
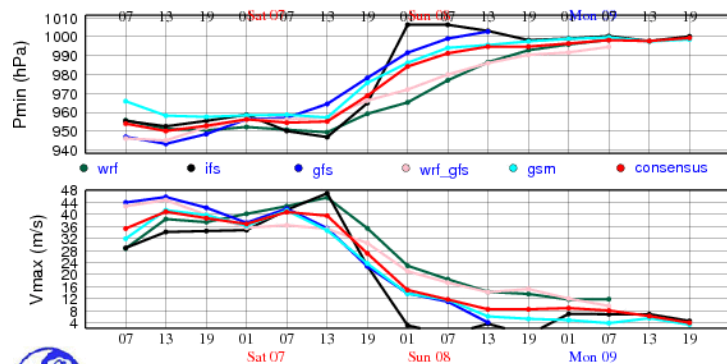
Models agreed on the moving direction and intensification time of TY, but underestimated the inland rainfall. Regional models forecasted a slower movement of TY than those in global deterministic ones.



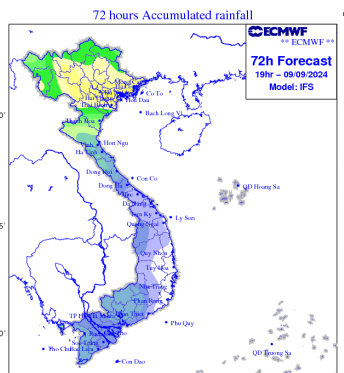
Prediction of Pmin and Vmax for YAGI



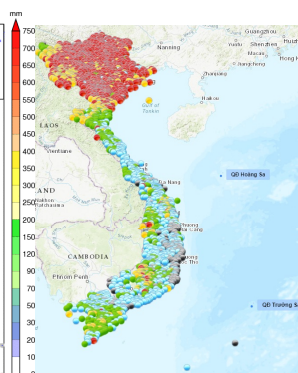
Prediction of Pmin and Vmax for YAGI



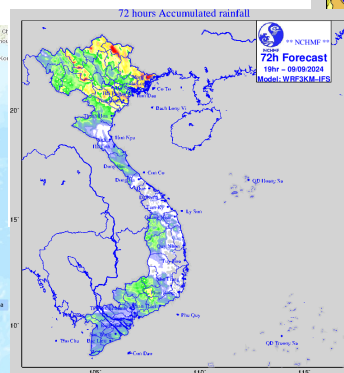
GSM



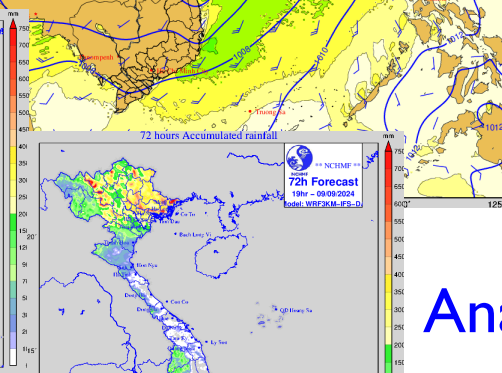
EC



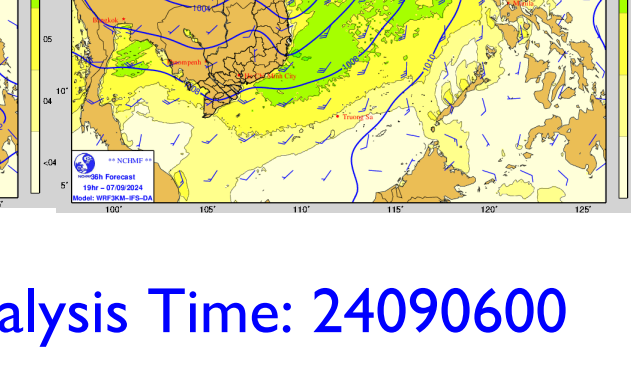
OBS



WRF-IFS



WRF-IFS-DA



Analysis Time: 24090600



THANK YOU FOR YOUR ATTENTION!

